



# Stratified landscapes and rural practices in Liguria

Rebekka Dossche, Sabina Ghislandi, Alessandro Panetta, Caterina Piu



**DAFIST** - DIPARTIMENTO DI ANTICHITA'  
FILOSOFIA E STORIA

**DISTAV** - DIPARTIMENTO DI SCIENZE  
DELLA TERRA E DELLA VITA



*Agenzia per la  
Coesione Territoriale*

# Stratified landscapes and rural practices in Liguria

**Alessandro Panetta**

**Inventing landscapes, interpreting landscapes**

**Rebekka Dossche**

**How is rural living heritage perceived by local communities?  
A participatory approach in the Ligurian Apennines.**

**Caterina Piu**

**History and archaeology of the collective property of Bosco Fontana**

**Sabina Ghislandi**

**Soil investigation in the Biogenic Nature Reserve of Agoraie**



# Inventing landscapes, interpreting landscapes

**Alessandro Panetta**

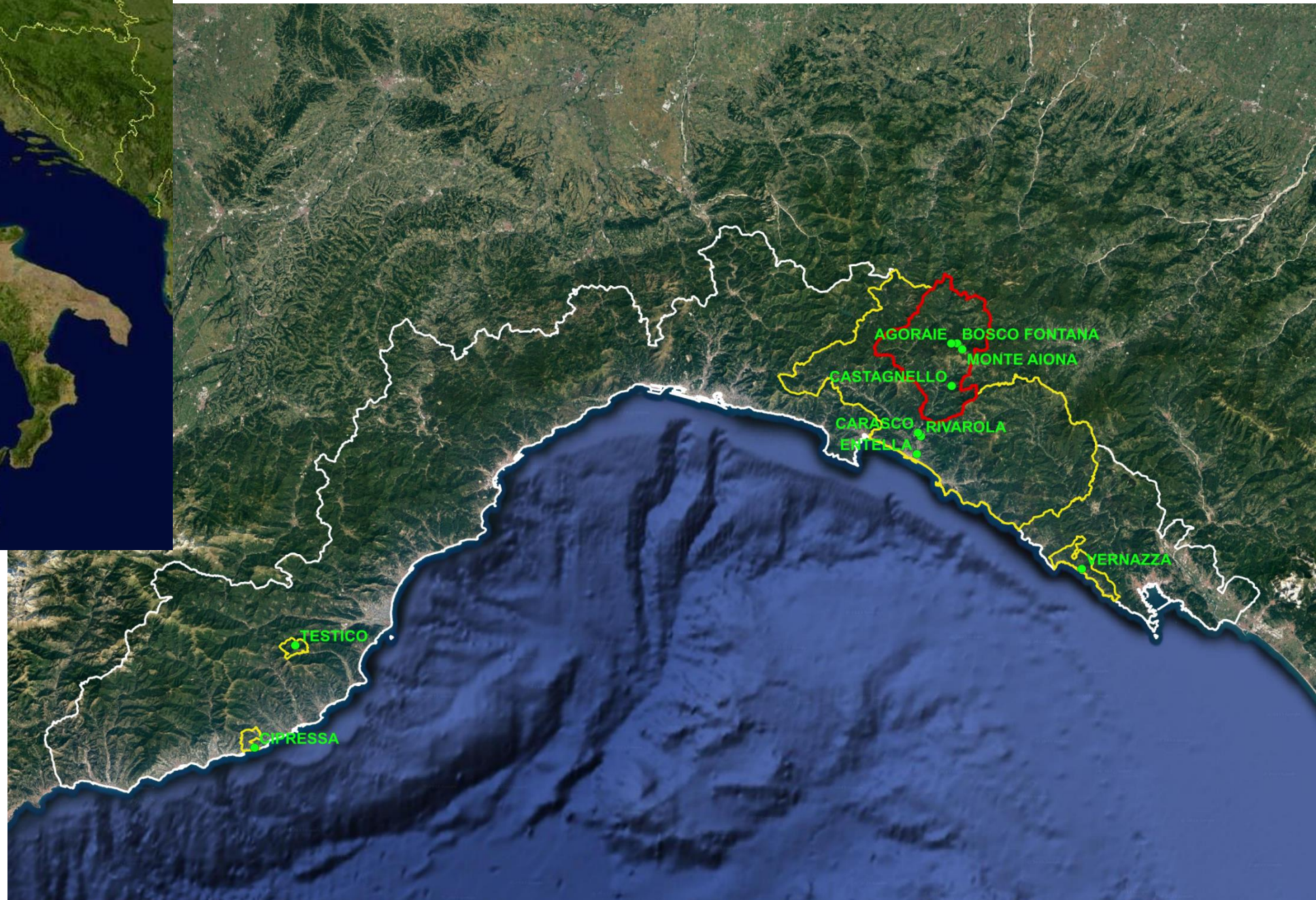


**DAFIST** - DIPARTIMENTO DI ANTICHITA'  
FILOSOFIA E STORIA

**DISTAV** - DIPARTIMENTO DI SCIENZE  
DELLA TERRA E DELLA VITA



*Agenzia per la  
Coesione Territoriale*





AGORAIE BOSCO FONTANA

MONTE AIONA

CASTAGNELLO

CARASCO RIVAROLA

ENTELLA

VERNAZZA

# BANDITO DI AMBORZASCO (S. STEFANO D'AVETO PASTURES LANDSCAPE)

1955



2003

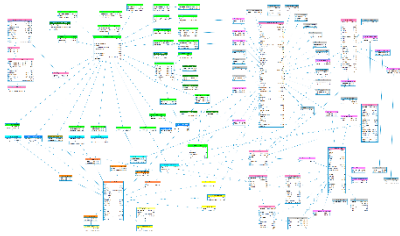




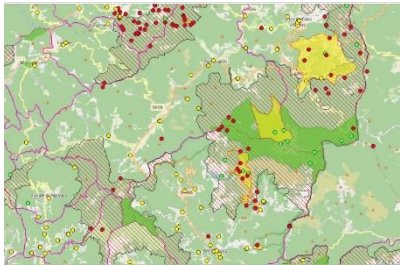
**CURRENT LANDSCAPE**



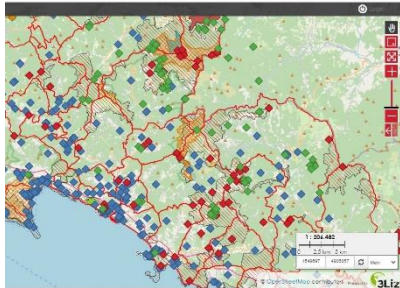
**HISTORICAL LANDSCAPE**



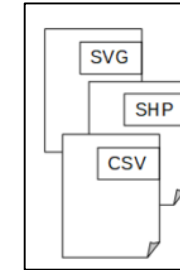
**INVENTORING (DATABASE)**

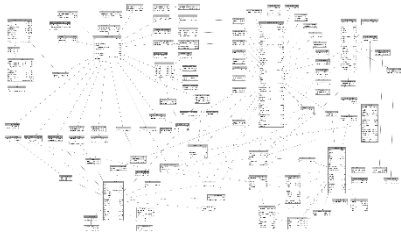


**INVENTORING (GIS)**

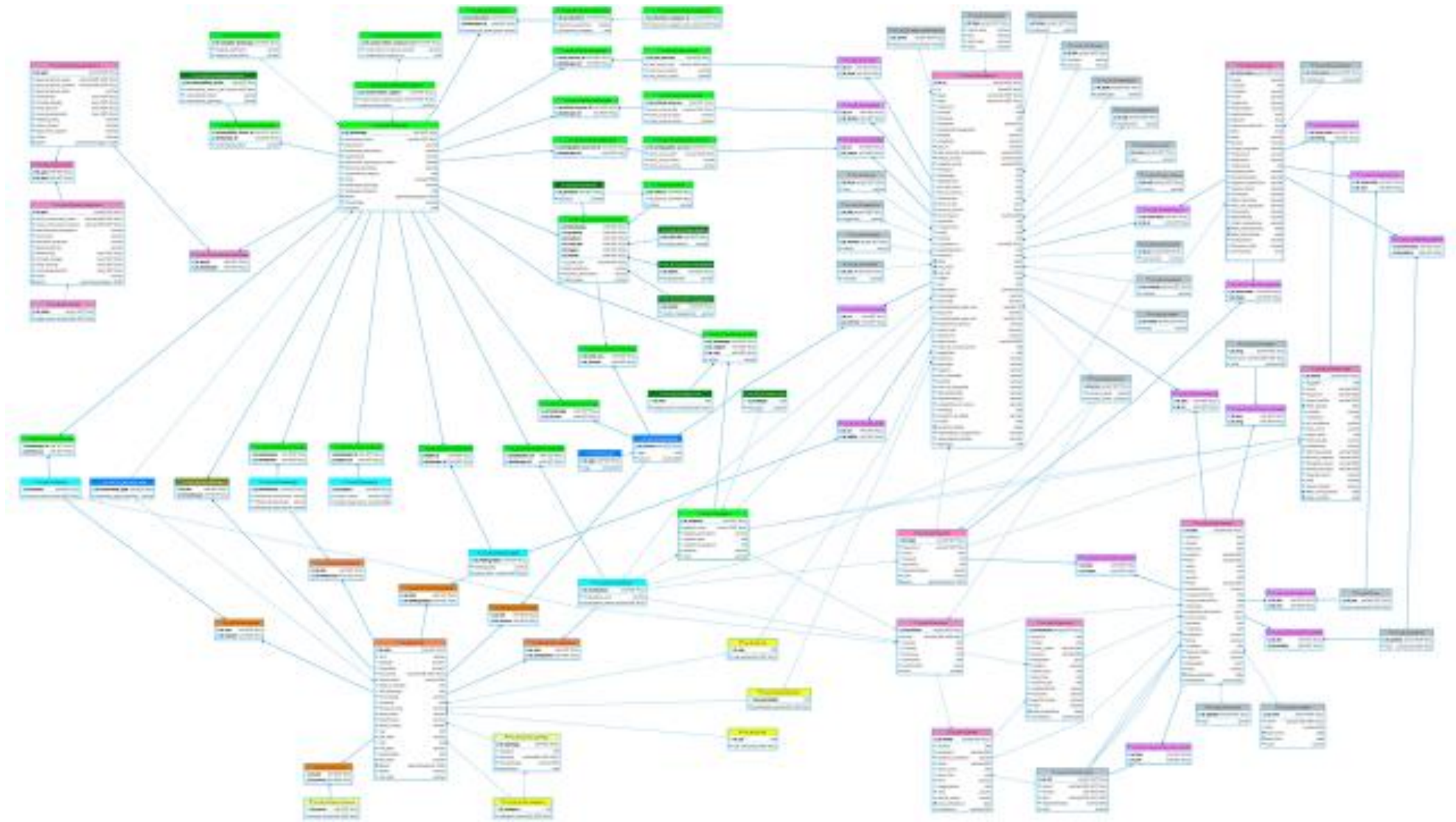
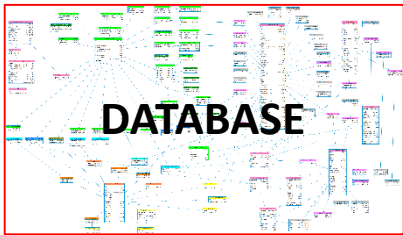


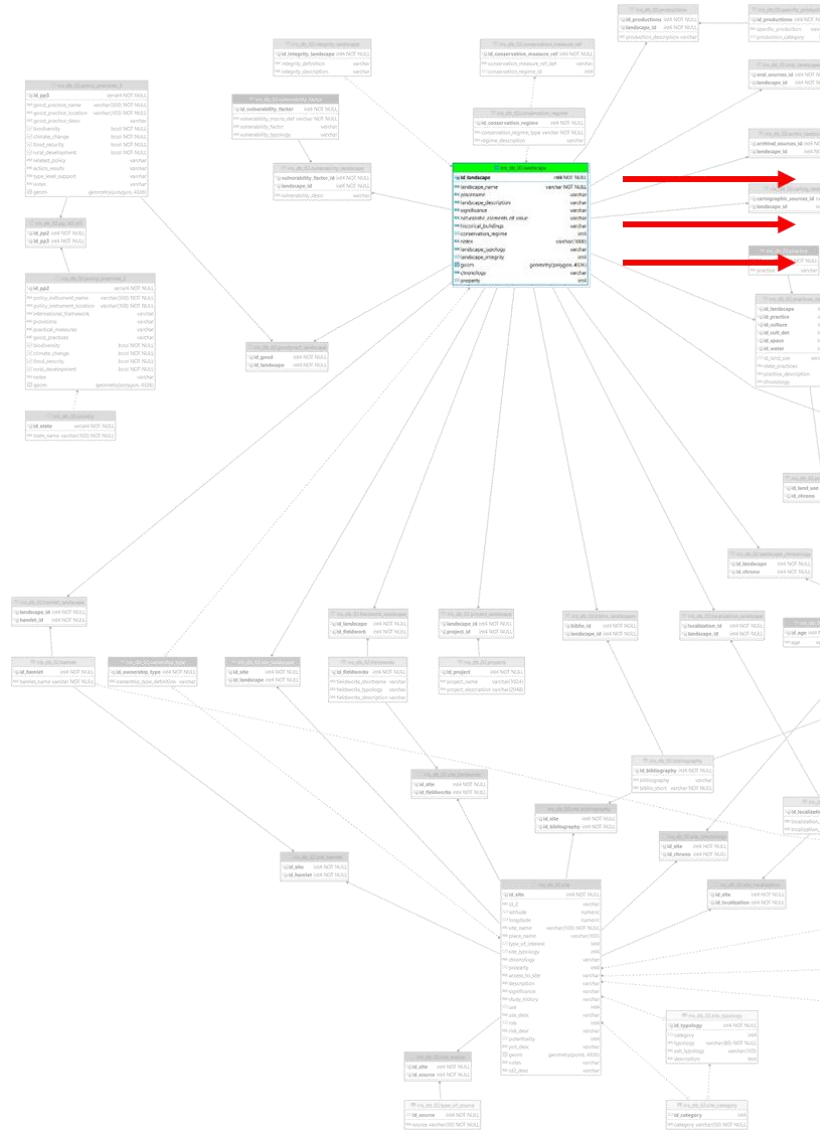
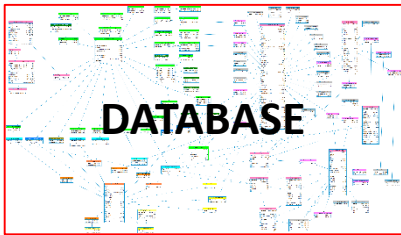
**DISPLAYING (WEBGIS)**





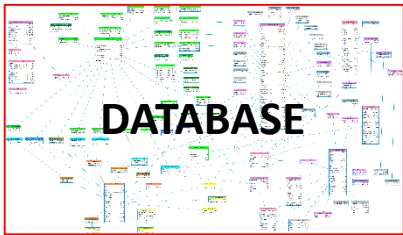






iris_db_02.landscape	
123 id_landscape	int4 NOT NULL
ABC landscape_name	varchar NOT NULL
ABC placename	varchar
ABC landscape_description	varchar
ABC significance	varchar
ABC naturalistic_elements_of_value	varchar
ABC historical_buildings	varchar
123 conservation_regime	int4
ABC notes	varchar(1000)
ABC landscape_typology	varchar
123 landscape_integrity	int4
geom	geometry(polygon, 4326)
ABC chronology	varchar
123 property	int4

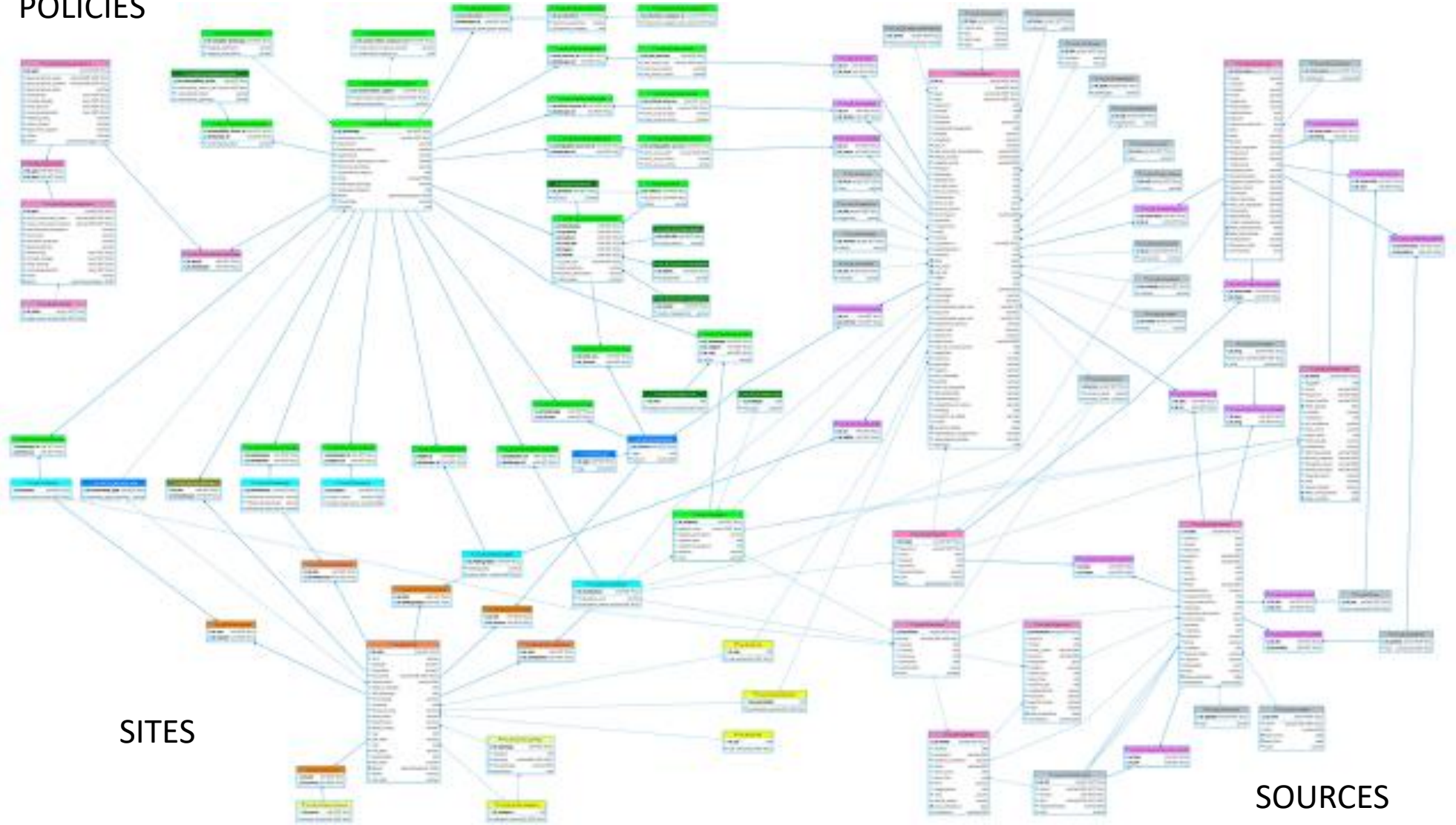




# LANDSCAPES

# ARCHEAOLOGICAL SURVEY

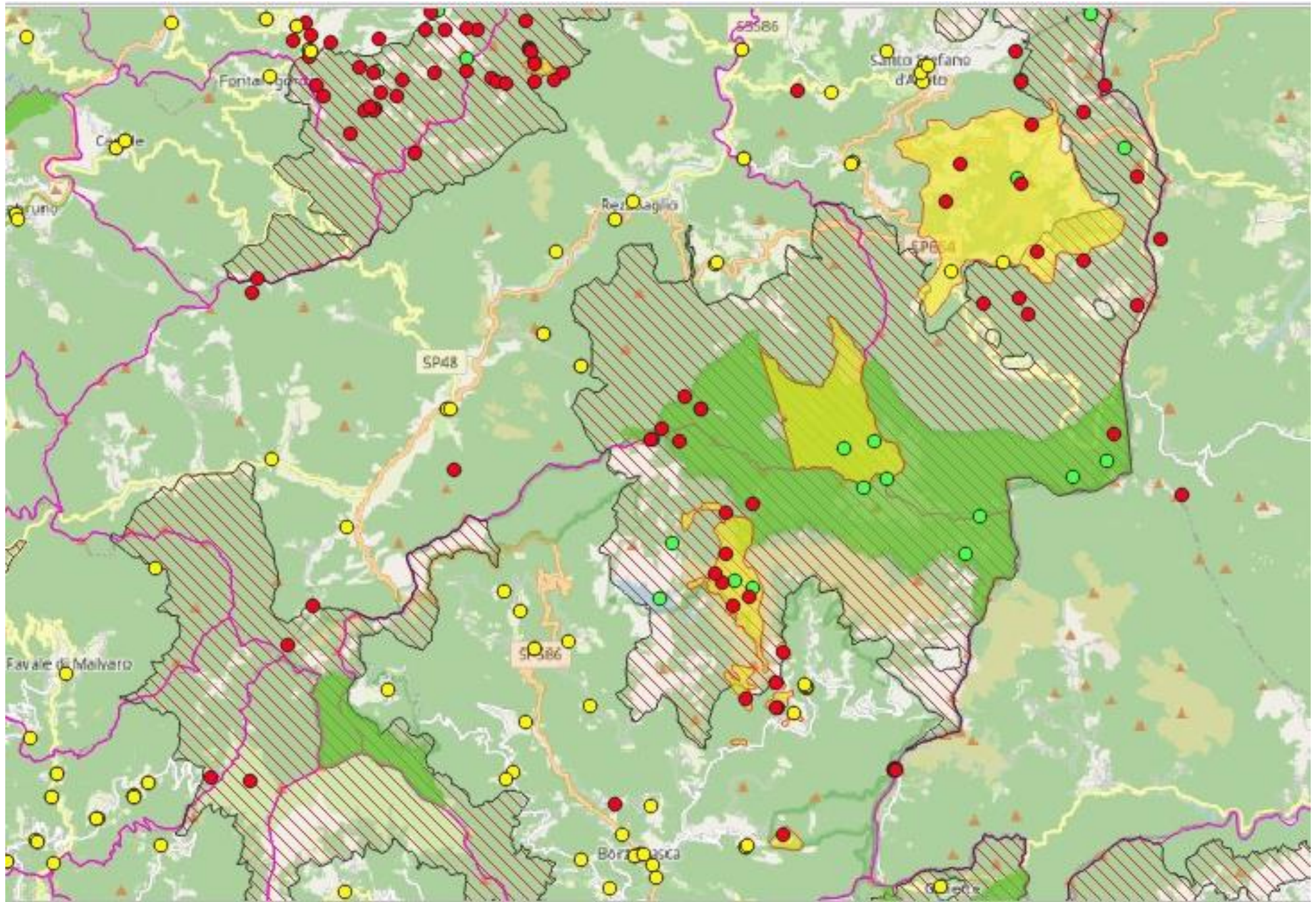
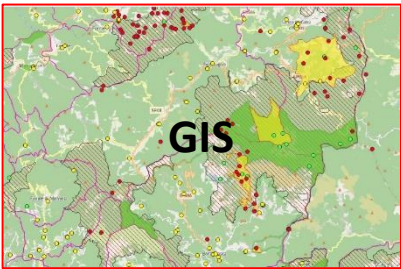
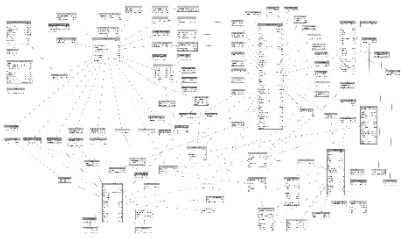
## POLICIES

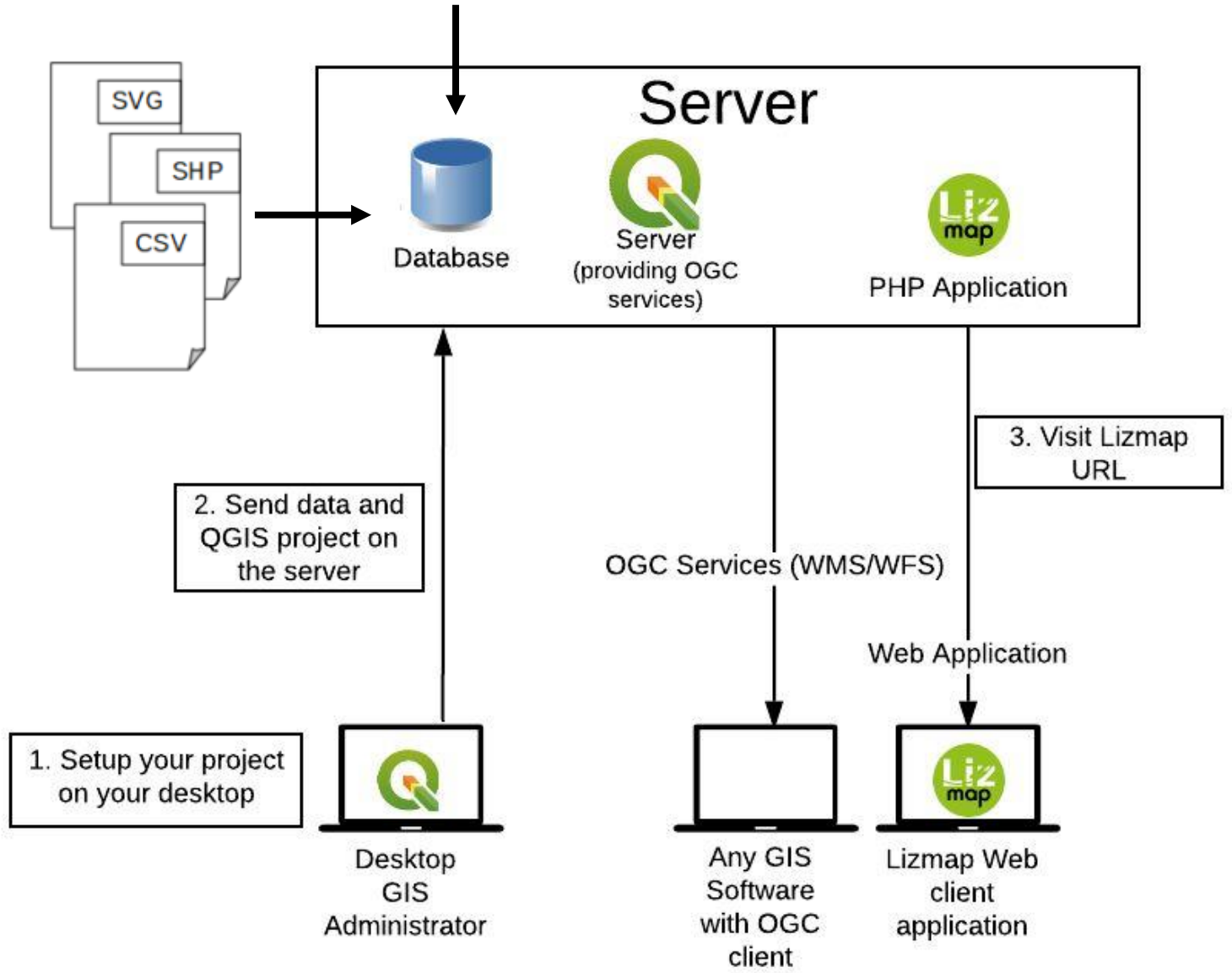
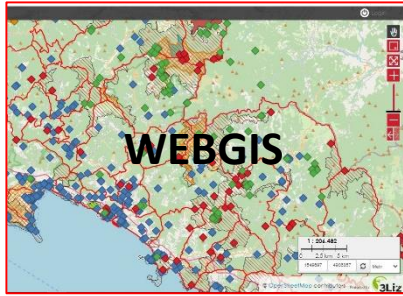
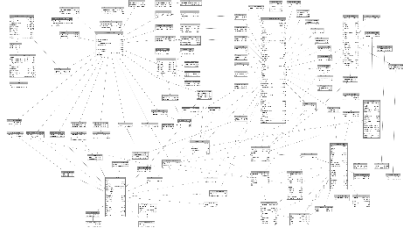


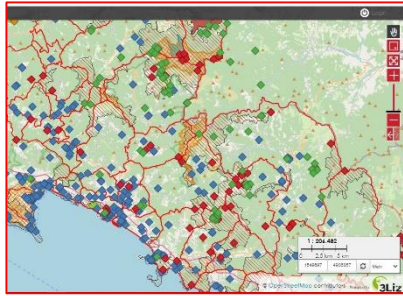
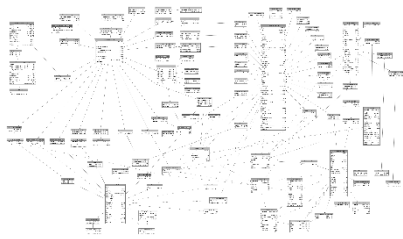
## SITES

## SOURCES









IRIS Utente1

Layer

- Siti di interesse
  - architectural/monumental
  - historical-environmental
  - archaeological
  - naturalistic
- Comuni
- S.I.C. (Siti di Interesse Comunitario)
- Parchi Regionali
- Paesaggi
- ESRI Satellite

Layer di base

OpenStreetMap

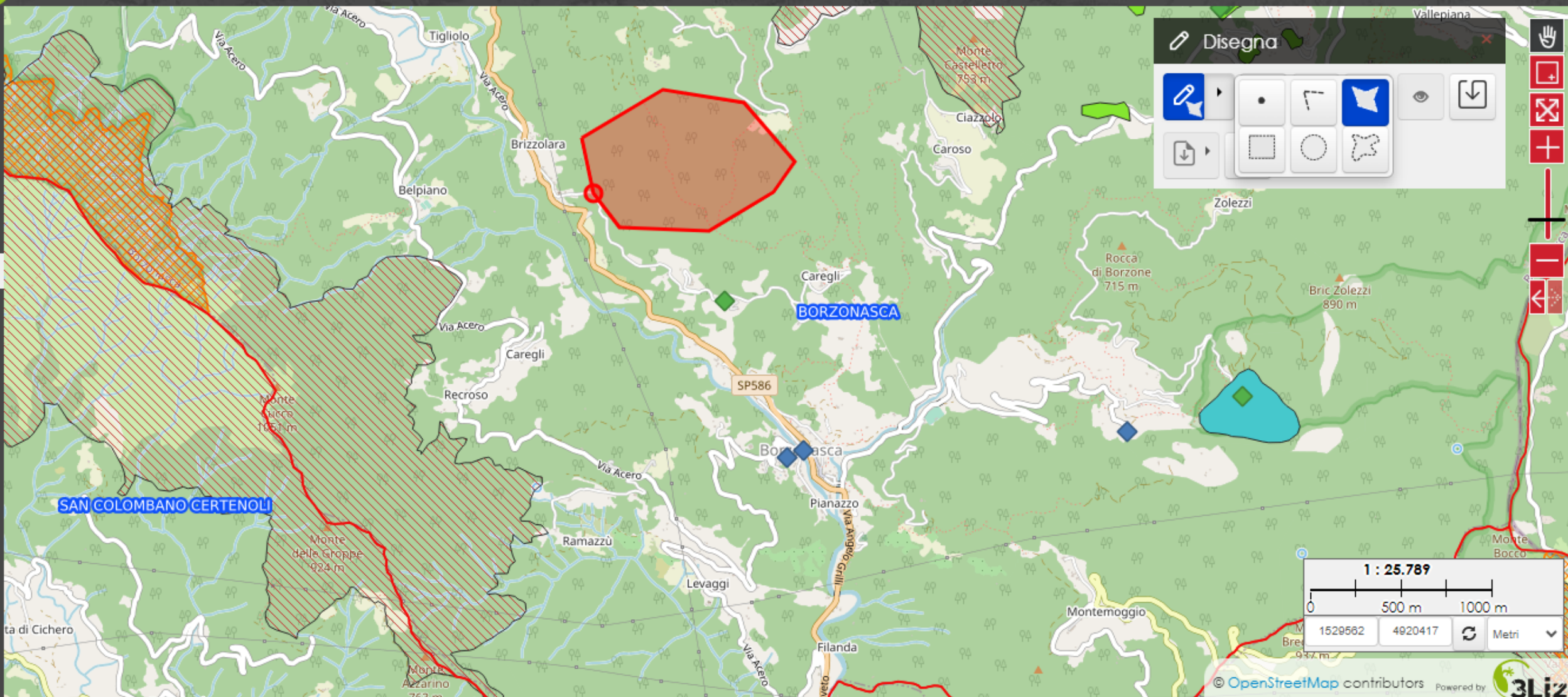
Recco

Scale: 1 : 206.482

0 2.5 km 5 km

1549697 4906857 Metri

© OpenStreetMap contributors Powered by 3Liz



Disegna

- Clipboard icon
- Point icon
- Line icon
- Area icon
- Eraser icon
- Undo icon
- Download icon
- Rectangle icon
- Circle icon
- Freehand icon

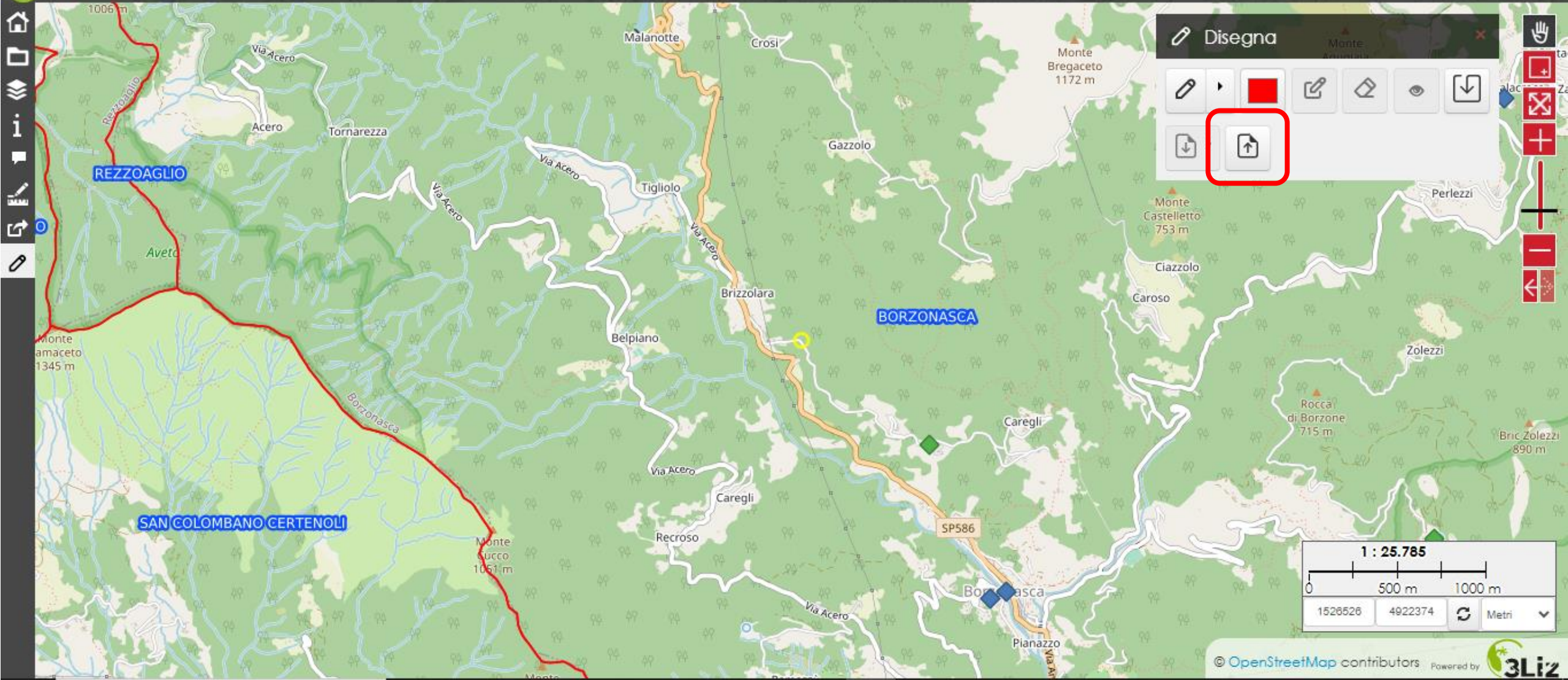
- Home icon
- Fullscreen icon
- Print icon
- Zoom in (+) icon
- Zoom out (-) icon
- Reset zoom icon

1 : 25.789

0 500 m 1000 m

1529582 4920417

Metri



Disegna

Monte Bregaceto 1172 m

Monte Castelletto 753 m

Perlezzi

Monte amaceto 1345 m

Monte Succio 1051 m

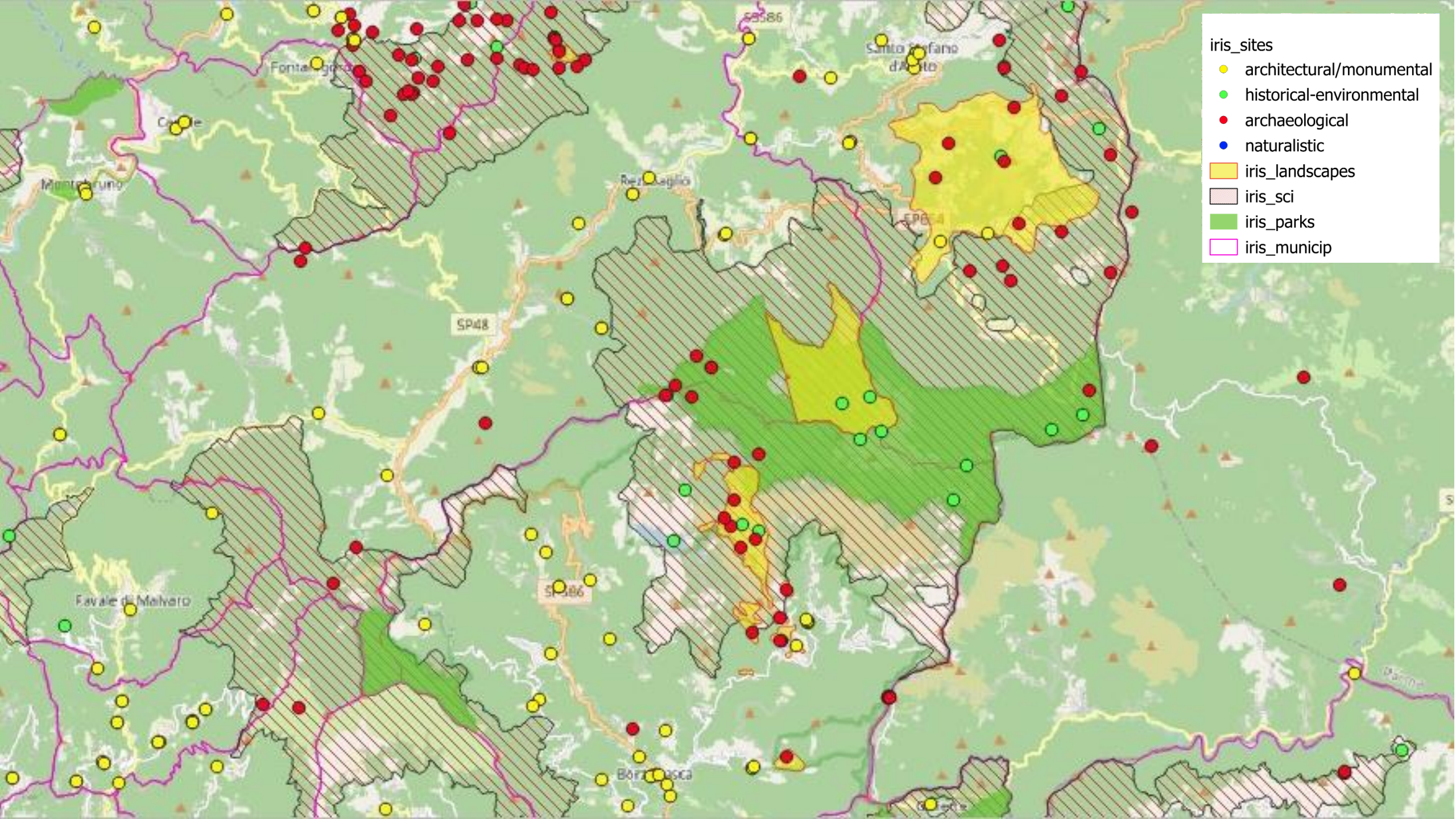
1 : 25.785

0 500 m 1000 m

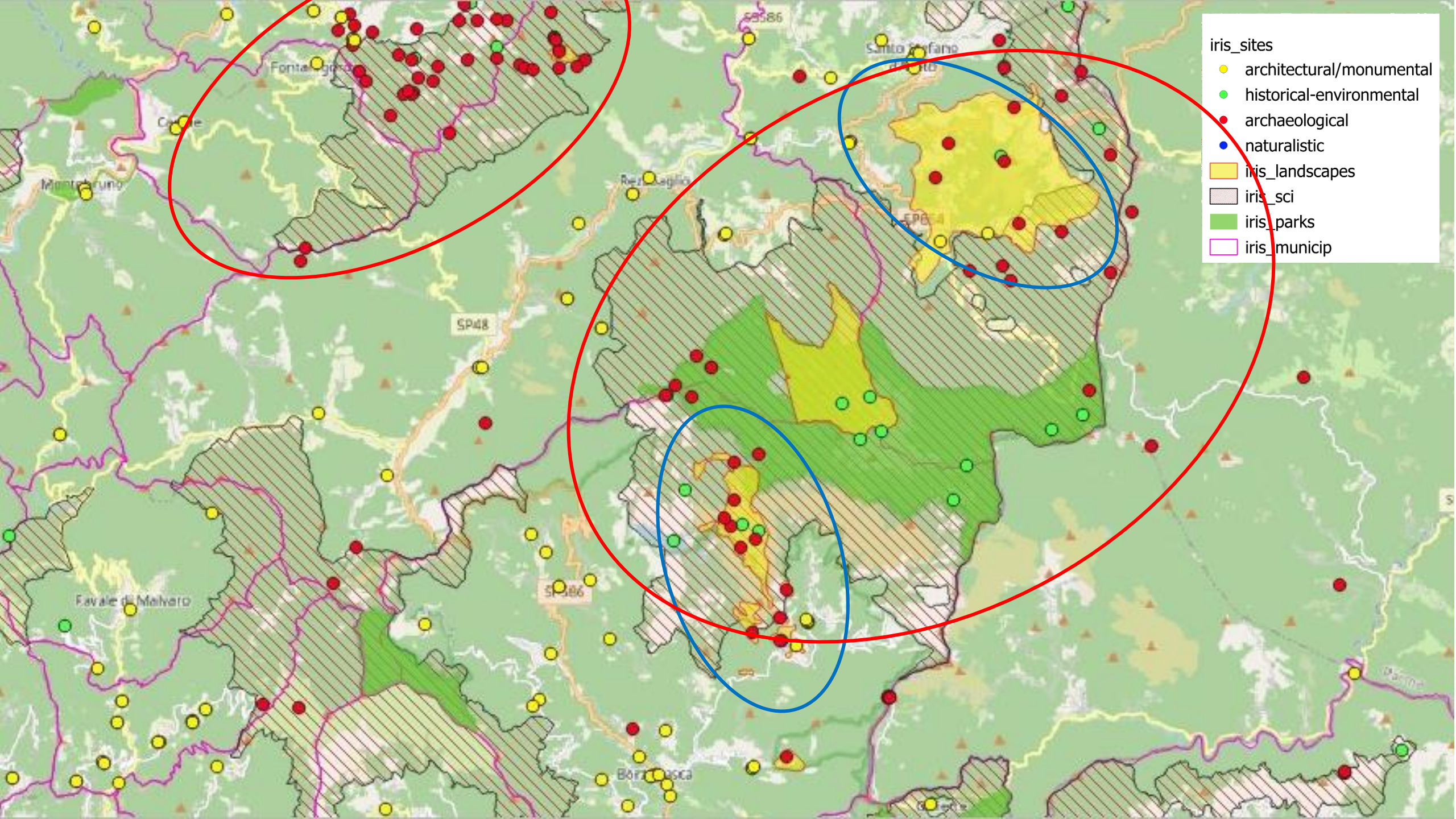
1528526 4922374 Metri

© OpenStreetMap contributors Powered by 3Liz

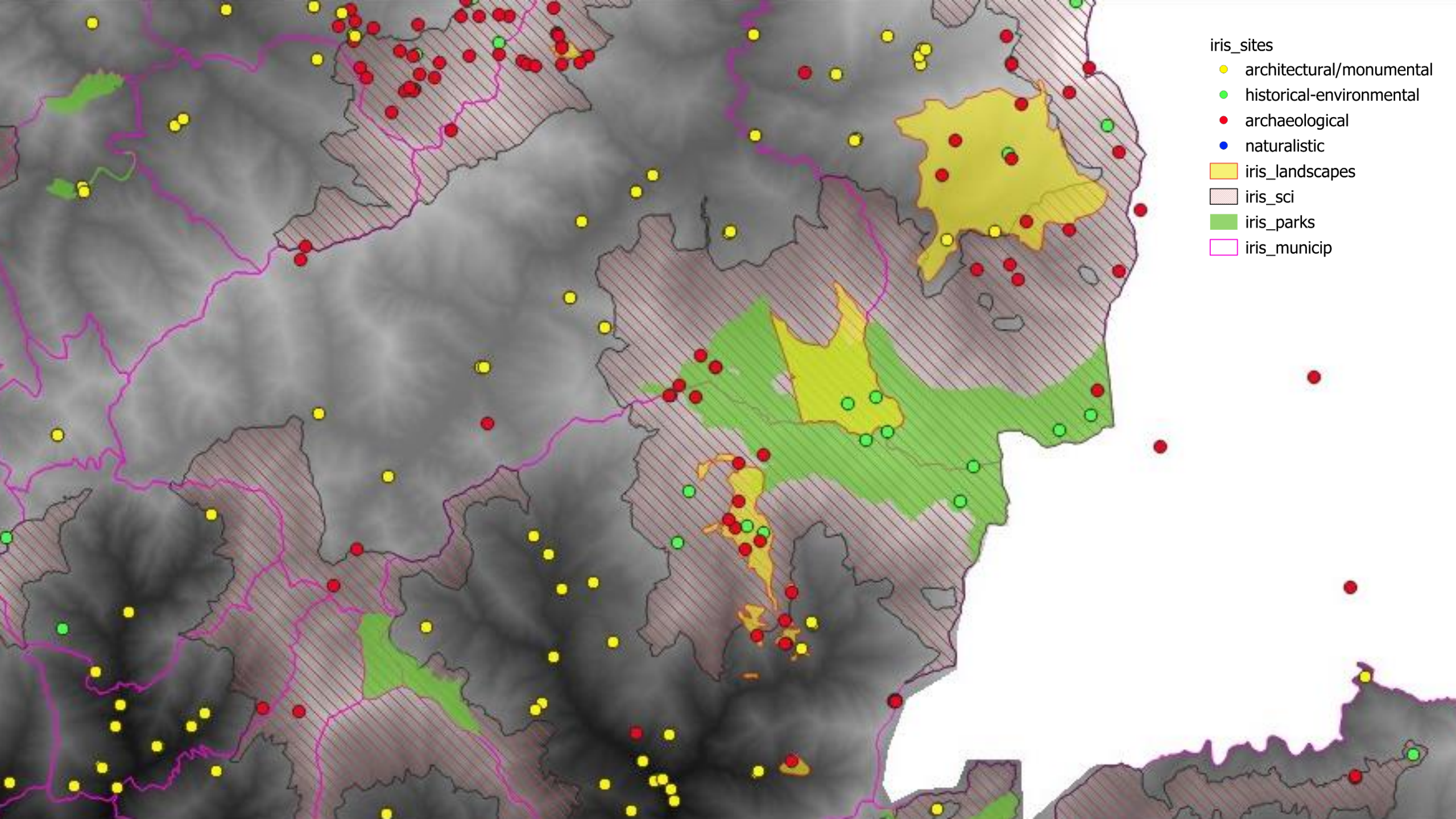




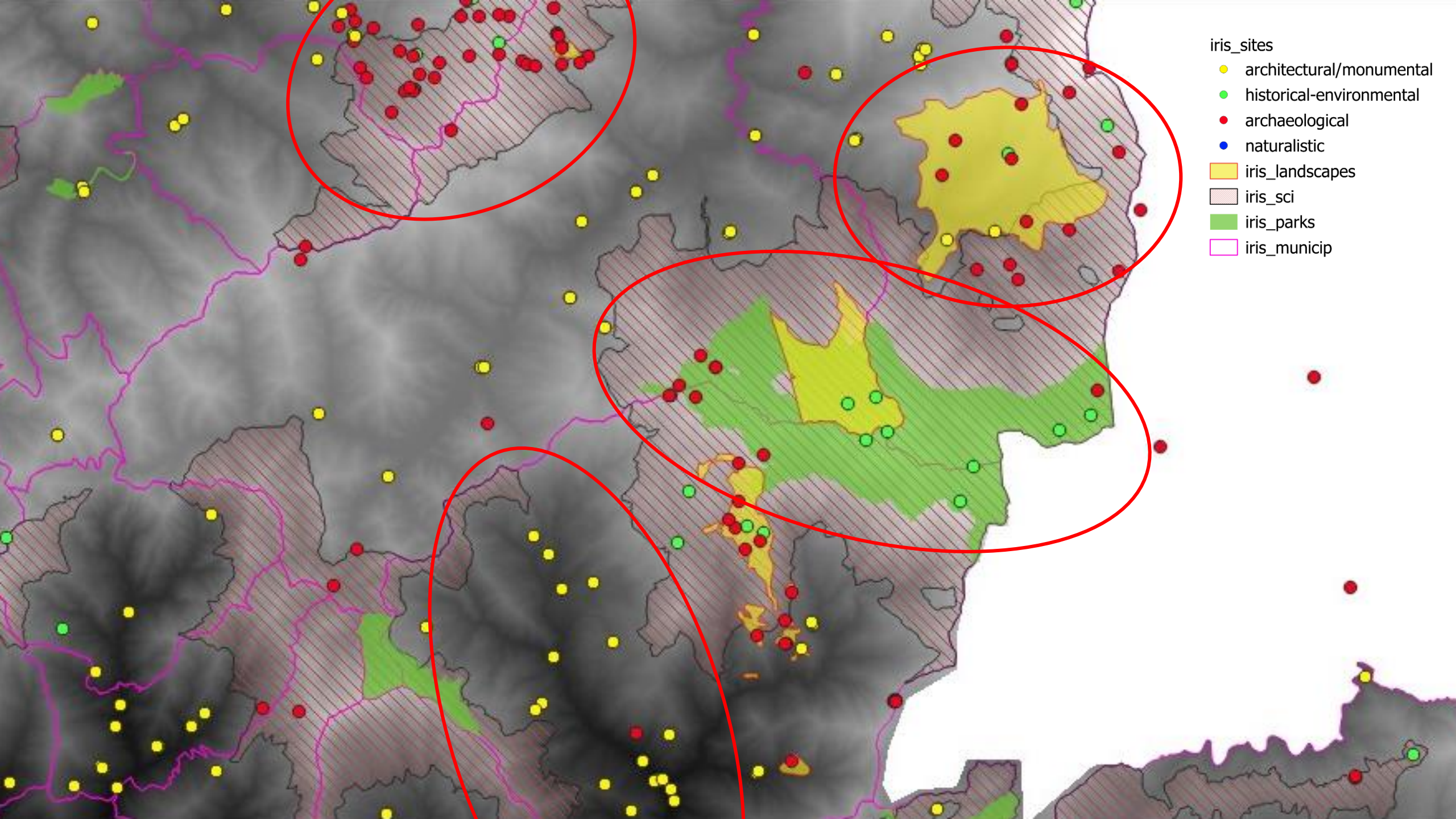
- iris\_sites
- architectural/monumental
  - historical-environmental
  - archaeological
  - naturalistic
- iris\_landscapes
- iris\_sci
- iris\_parks
- iris\_municip



- iris\_sites
- architectural/monumental
  - historical-environmental
  - archaeological
  - naturalistic
- iris\_landscapes
- iris\_sci
- iris\_parks
- iris\_municip



- iris\_sites
- architectural/monumental
  - historical-environmental
  - archaeological
  - naturalistic
  - iris\_landscapes
  - iris\_sci
  - iris\_parks
  - iris\_municipip



- iris\_sites
- architectural/monumental
  - historical-environmental
  - archaeological
  - naturalistic
- iris\_landscapes
- iris\_sci
- iris\_parks
- iris\_municip

# TO CONCLUDE...(1/2)

## **PREMISES OF IRIS PROJECT...**

THESE LANDSCAPES ARE A **COMPLEX HERITAGE**, RESULT OF THE **INTERACTION** OF NATURE AND CULTURE OVER MILLENNIA, BUT CURRENT CONSERVATION MEASURES FAIL TO CONSIDER THE **HISTORIC DIMENSION** OF UPLAND LANDSCAPES, UNDERESTIMATING THE CONTRIBUTION OF LOCAL PRACTITIONERS IN SUSTAINING THEIR ENVIRONMENT THROUGH ACTIVE USE.

## **...& FINAL CONSIDERATIONS**

IT'S NOT ACCIDENTAL THAT MANY OF THESE IMPORTANT ENVIRONMENTAL-ARCHAEOLOGICAL LANDSCAPES, ARE PLACED WITHIN AREAS RECOGNIZED OF NATURALISTIC VALUE, SUCH AS SITES OF COMMUNITARIAN IMPORTANCE. MANY TIMES THE RICH **BIODIVERSITY** OF SITES IS CAUSED BY COMPLEX HISTORICAL DYNAMICS THAT AFFECTED THESE AREAS.

## TO CONCLUDE...(2/2)

### POSSIBLE FURTHER DIRECTIONS

- “CORRELATION” BETWEEN DIFFERENT HERITAGE” AND THE **SOCIETIES** WHO PRODUCED THAT (AND COMMUNITIES WHICH CURRENTLY ARE PRESERVING AND MANAGE THAT) AND THE **SPACES** WHERE ALL OF THIS HAPPENED, WHERE THIS HERITAGE WAS BUILT, MANAGED AND EVENTUALLY TRANSFORMED THROUGH TIME.
- AND ALSO, SPEAKING ABOUT TIME, TO DEEPEN THE **DIACHRONIC PERSPECTIVE**, IF POSSIBLE, OF THE HERITAGE OF THESE AREAS, ADDING A ‘TRIDIMENSIONAL’ PERSPECTIVE TO THIS SPATIAL-FLAT MAPS.



THANK YOU



**DAFIST** - DIPARTIMENTO DI ANTICHITA'  
FILOSOFIA E STORIA

**DISTAV** - DIPARTIMENTO DI SCIENZE  
DELLA TERRA E DELLA VITA



*Agenzia per la  
Coesione Territoriale*